



VMware ESXi 3.5 update 2

For more information on Virtualization Performance, you can reach us at:

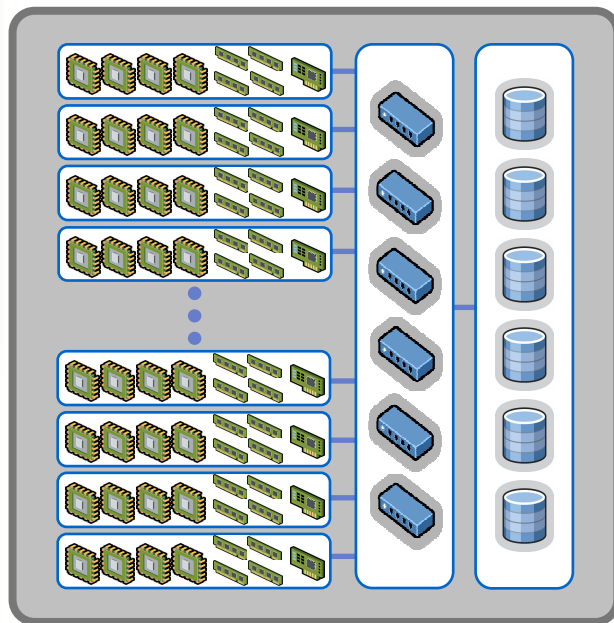
Website: www.virtualizationperformance.com
Tel: (813) 805-8750
Fax: (813) 436-5301
Mailing Address: P.O. Box 23682, Tampa, FL 33623



VMware ESXi 3.5 – Exec Summary

What is it?	Next generation, thin hypervisor for FREE
What does it do?	Partitions servers to create the most robust foundation for a dynamic, automated data center
What is unique?	<ul style="list-style-type: none">> Next generation, thin architecture provides improved security, reliability, and simplified management> Server integration provides rapid installation, configuration, and deployment
Who can use it?	<ul style="list-style-type: none">> All the sophistication of VMware ESX and VI3 for existing virtual infrastructure customers> Simple and intuitive start-up experience for the new virtualization user
How do you use it?	Supports all the VMware Infrastructure 3 features and benefits (appropriately licensed)

Hardware Trends Drive Virtualization



Massive compute supply mandates virtualization

- > High core count
- > Large memory
- > High speed converged I/O fabric

+

X86 continues upstream

- > 70-80% business compute needs

+

Minimal virtualization overhead

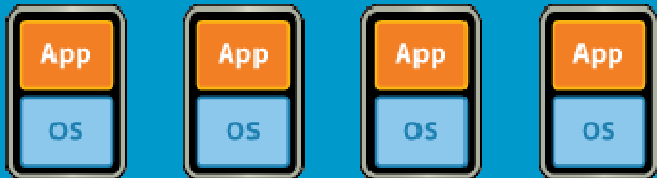
- > 3rd generation hardware assist
- > Virtualization-aware ecosystem

Virtualization becomes a default server feature

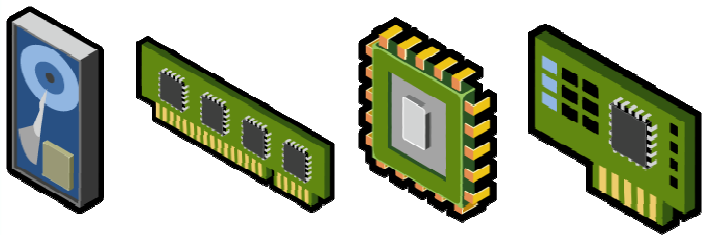
VMware ESXi Overview

Next generation of VMware's market-leading ESX hypervisor

Virtual Machines



VMware ESXi



Partitions a server into virtual machines

- > Reduces hardware, power, and cooling with the performance and features of ESX

Plug-and-Play

- > Minimal configuration. Run VMs in minutes

OS-Independent, thin architecture

- > Unparalleled security and reliability

Full-featured

- > Superior consolidation and scalability
- > Easy to manage with remote tools
- > Simple license upgrade to VI3 Enterprise

ESXi Distribution

- > Available from OEMs as an embedded hypervisor
 - Likely to charge for hardware / media costs
- > Available on www.vmware.com site as a FREE download
 - Download and hard drive install
 - Available standalone or in a VMware Infrastructure 3 (VI3) Bundle
- > Additional options available:
 - ESXi e-learning course via vmware.com e-commerce store
 - 9 new Virtual Appliances available under “Virtual Appliance->Import” in the VI Client

Positive Customer Response

Plug-and-Play Installation, Configuration, and Deployment

- “I bring up a new server every 2 weeks or so. Instead of taking 1/2 day, it takes about 5 minutes! Just plug it in!”
- “This simplifies deployments to my remote branches where there’s local, low-skilled administration”

Hardware Integration

- “Buying virtualization with hardware is a natural way to procure, cuts down significantly on internal certification”

Security and Reliability

- “I like the reduced security exposure and the opportunity to simplify patching and updating”

Start Running VMs in Minutes

1 VMware ESX Server (Build 0900)
OEM Machine Model
2 x 2.4 GHz Intel® Core™ Duo Processors
4.0 GB PC2-5300 (667MHz) DDR2 Memory
Download tools to manage this host from:
<http://host1.subnet.domain.tld>
◀F2> Customize System

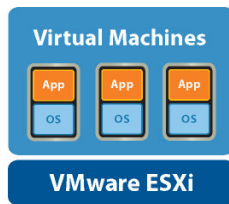
2 VMware Embedded ESX 3.1
pioneer.eng.umware.com
192.168.0.99 <DHCP>
To manage this host remotely, visit:
<http://xxx.xxx.xxx/>
Settings and Utilities
Configure Admin Password
Configure Remote Access
Configure Management Network
Test Management Network
View Logs
Restart Management Agent
Shut Down/Restart Host
Messages
Password for user "admin" is unset.
Remote access for user "admin" is enabled.
Local storage is not configured.
Networking is not completely configured.
<Esc> Log Out

3 VMware Embedded ESX 3.1
pioneer.eng.umware.com
192.168.0.99 <DHCP>
To manage this host remotely, visit:
<http://xxx.xxx.xxx/>
Configure Management Network
Hostname pioneer14.eng.v...
Network Adapters <Enter>
VLAN (Optional) Not Set
IP Configuration Automatic
IP Address 192.168.0.99
Subnet Mask 255.255.255.0
Default Gateway 192.265.98.1
DNS Configuration Manual
Primary Server 165.453.2...
Secondary Server Not Set
DNS Suffixes esx.umwa...
<Up/Down> Select
This value becomes read-only when IP Configuration is Automatic. You may edit the value if IP Configuration is Manual.

4 Virtual Infrastructure Client
vmware
Virtual Infrastructure Client
Server: 10.20.124.183
Username:
Password:
Log In Close Help

1. Power on server and boot into hypervisor
2. Configure Admin Password
3. (optional) Modify network configuration
4. Connect VI Client to IP Address
 - > Or manage with VirtualCenter

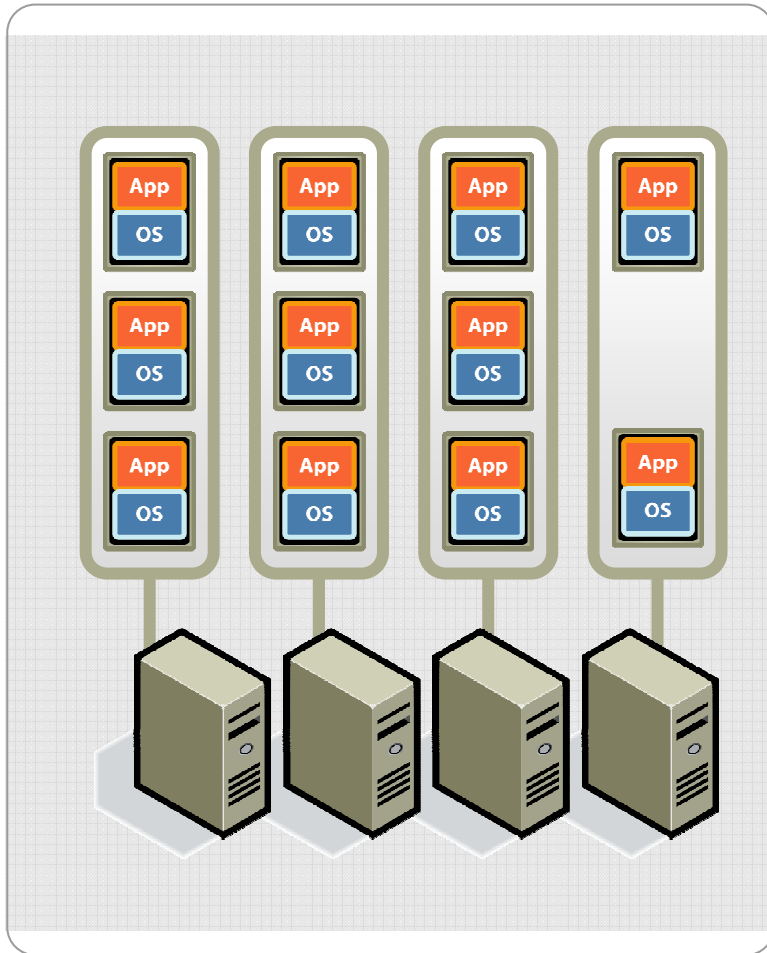
Industry is Designing for Virtualization



- > VMware ESXi built into server hardware and available as a FREE software download on www.vmware.com
- > Virtualization optimized server designs:
 - Multi-core
 - Large memory configurations
 - Multiple NICs
 - Diskless servers
- > Virtualization support in processors and chipset
 - VT, AMD-V
 - NPT, EPT

Physical Server

Enabling the 'Plug-and-Play' Datacenter



- > DRS + VMware ESXi: "Hot add" of compute capacity
- > Standardized compute nodes
 - No installation and minor configuration
 - Few interfaces and small footprint
 - Reliability and manageability of hardware

Size Does Matter



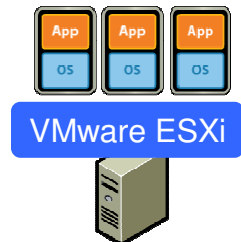
*Windows 2008
Server Core with
Hyper-V RC0
2.6 GB*

The Hypervisor is One Component of the Total Solution that Customers Require

VMware ESXi vs. VMware Infrastructure

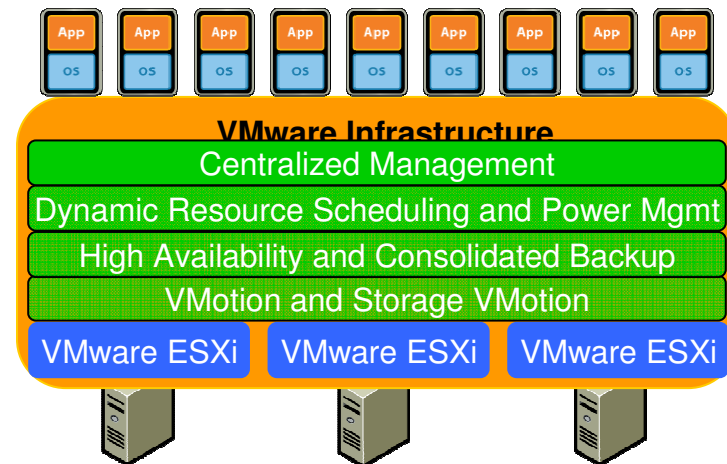
VMware ESXi

- Single server partitioning
- Production-class hypervisor
- Advanced server resource management
- FREE



VMware Infrastructure

- Pools of computing resources
- Built-in automation, availability and manageability
- Three bundles, all inclusive of ESXi, starting at \$995



The hypervisor is to Virtual Infrastructure what the engine is to a car, or the BIOS to a PC – an enabling component but not the whole solution.

VMware Infrastructure 3 Editions

Resource Management Power Management				DRS DPM
Live VM Migration Live VM Disk File Migration				VMotion™ Storage VMotion
Availability			High Availability	High Availability
Backup		Consolidated Backup	Consolidated Backup	Consolidated Backup
Patch Management		Update Manager	Update Manager	Update Manager
Central Mgmt		VC Agent	VC Agent	VC Agent
Storage Virt.	VMFS Virtual SMP™	VMFS Virtual SMP™	VMFS Virtual SMP™	VMFS Virtual SMP™
Enterprise VMs	VMware ESXi	VMware ESXi OR VMware ESX	VMware ESXi OR VMware ESX	VMware ESXi OR VMware ESX
Next Generation Hypervisor	FREE ESXi	VI Foundation	VI Standard	VI Enterprise
License	\$0	\$995	\$2,995	\$5,750
SnS (Gold/Plat)	\$495 / \$595*	\$545 / \$645	\$629 / \$749	\$1,208 / \$1,438
Per Incident	\$299**			

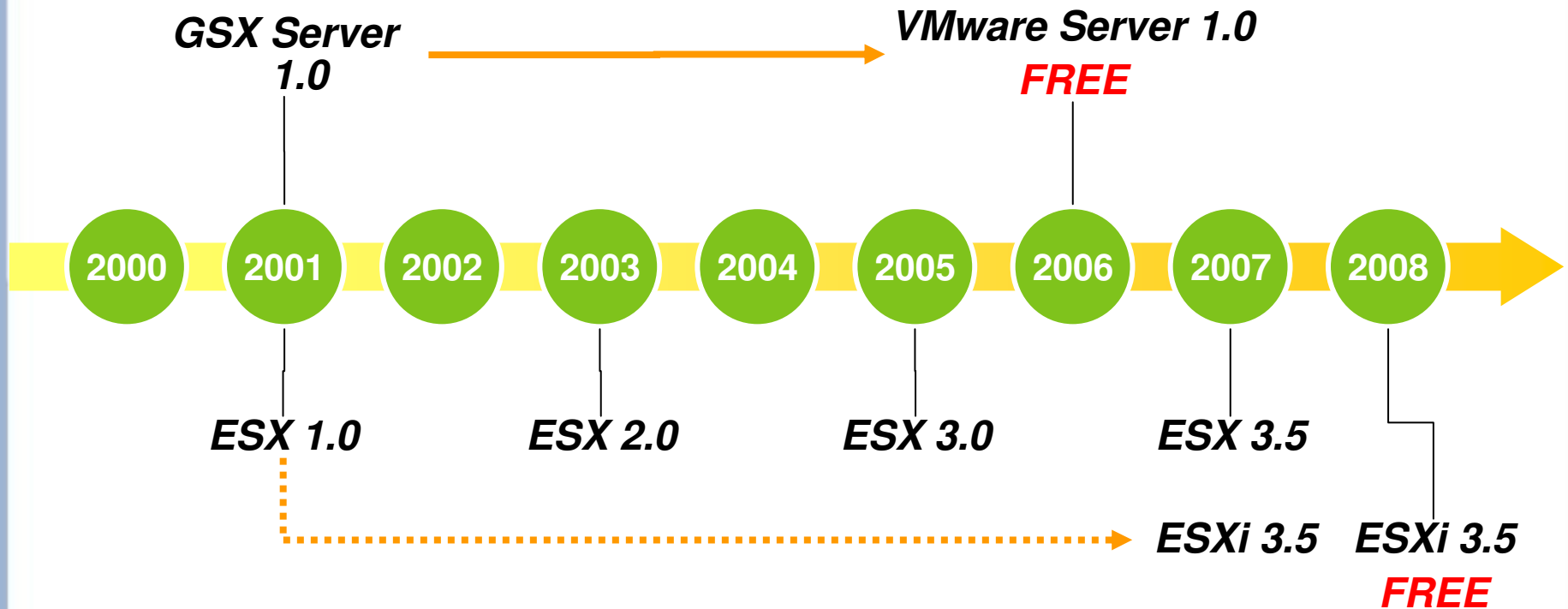
*SnS is optional for VMware ESXi

**3 and 5 incident packs available at a discount

Making A Base Level Product Free is Tried and Tested Business Model for VMware

VMware Virtualization Platform Timeline

GSX Server was made FREE in 2006 and has generated millions of downloads



VMware ESXi – Industry’s Leading Hypervisor

Significant Advantages Over MS Hyper-V

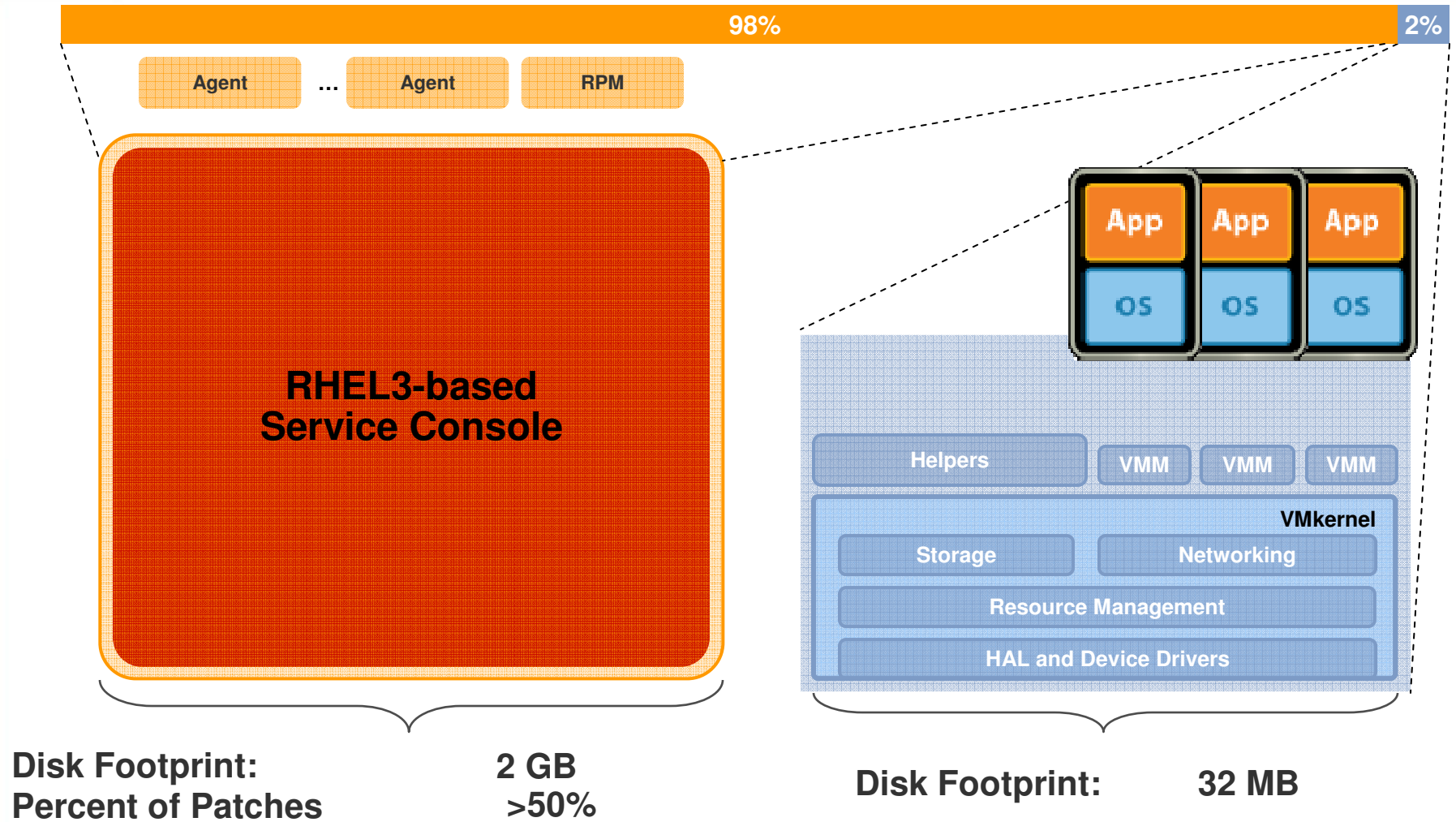
	VMware ESXi	Microsoft Hyper-V	Comments
Reliable, Robust, Secure	●	○	<ul style="list-style-type: none"> ▶ ESXi’s ultra-thin 32MB disk footprint with no reliance on a gen. purpose OS reduces patches. Hyper-V + Server Core’s footprint is 2.6GB (>80X greater) ▶ ESXi is 3rd gen product with proven customer success. Hyper-V is version 1.0 MS product with core feature limitations.
Guest OS support	●	◐	<ul style="list-style-type: none"> ▶ ESXi 3.5 supports 18 different guest OSES (Windows, Linux, Netware, Solaris); OS-agnostic– treats all guests fairly in a heterogeneous environment ▶ Hyper-V supports only 6 guest OSES and <i>only</i> Win2008 guests get all the benefits of Hyper-V (Win2003 and Linux guests perform worse)
Performance	●	◐	<ul style="list-style-type: none"> ▶ MSFT focusing on single VM performance of Win2008 guests; Hyper-V scales poorly compared to ESX when running concurrent workloads ▶ Many Hyper-V performance features only enabled for Win2008 guests (ex. 4-way vSMP)
VM Density per Host	●	○	<ul style="list-style-type: none"> ▶ VM density directly impacts cost. Hyper-V lacks advanced memory mgmt (ex. overcommit, page sharing), which results in the need for more hardware to run the same number of VMs as ESXi.
Functionality	●	◐	<p>In summary, Hyper-V lacks:</p> <ul style="list-style-type: none"> ▶ Small footprint ▶ Memory overcommit ▶ NIC teaming ▶ Universal 4-way vSMP support ▶ Scalable performance across heterogeneous VMs ▶ Clustered Filesystem



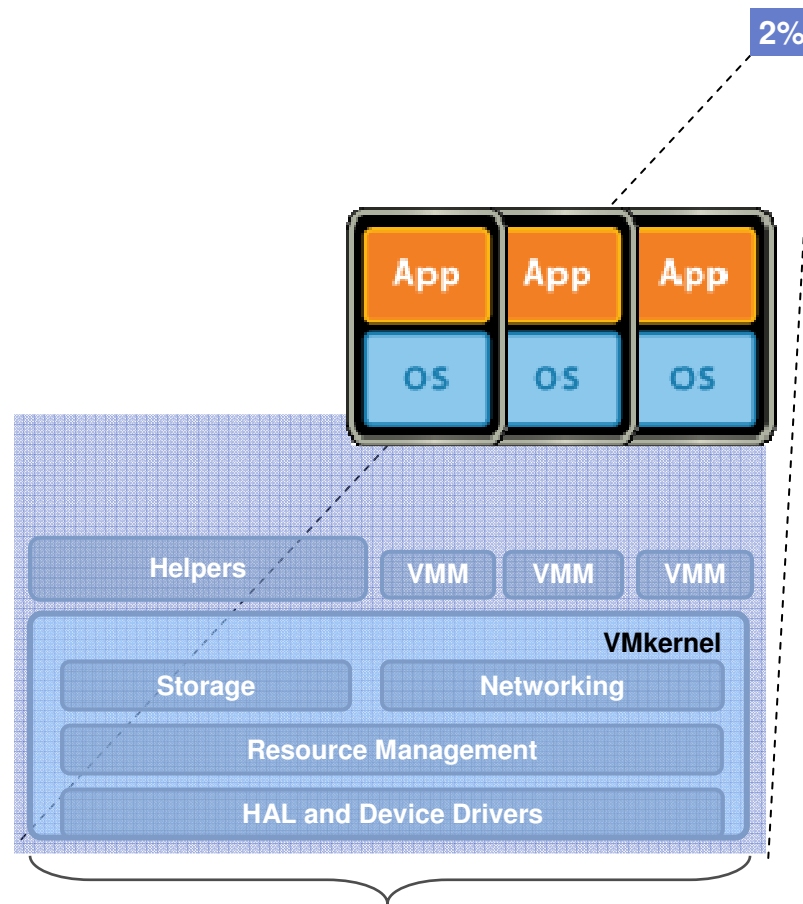
Product Details

- > Benefits of thin architecture**
- > Speed of deployment**

Traditional VMware ESX



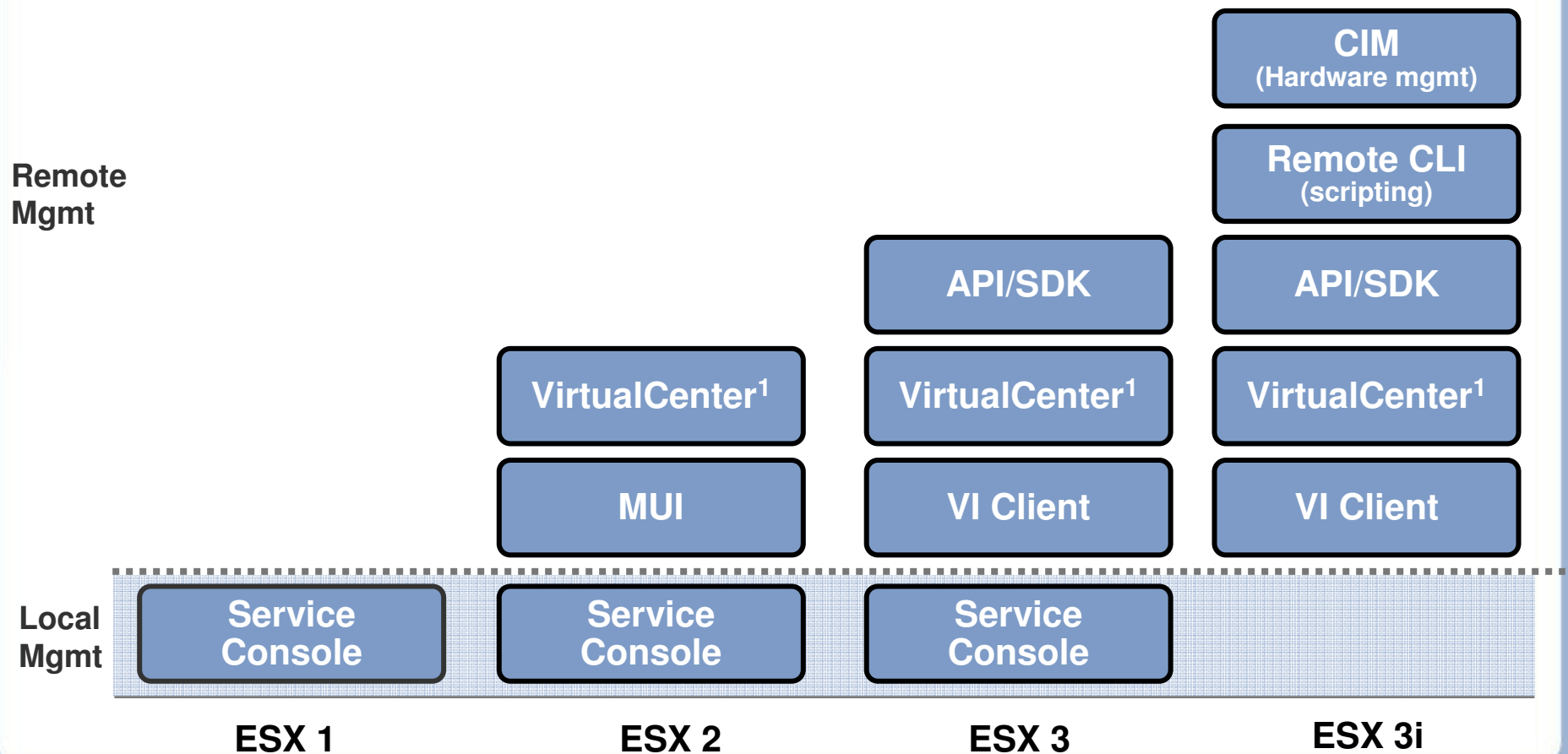
VMware ESXi: Thin Virtualization!



Disk Footprint: 32 MB

Evolution of VI Management

VMware ESXi continues trend of migrating management functionality from the Service Console to remote management tools



1. Note: Managing ESXi with VirtualCenter requires a VirtualCenter Agent license, available in any VI3 Bundle

Architectural Benefits

> **Unmatched security and reliability**

- OS independence means minimal interfaces and a small attack profile
- Locked down, menu-driven interface prevents users from running arbitrary code

> **Simplified management**

- No special operating system knowledge required (e.g. Linux)
- No user accounts or passwords to create and maintain
- No OS security hardening, antivirus, or backup effort required
- Integrated, standards-based CIM providers for hardware management

> **Fully featured and high performing**

- VMware ESXi supports all the functionality of VMware Infrastructure 3



How To Guide

- **Management model**
 - Remote CLI
 - CIM
- **Server Deployment**
- **Patching, upgrade**

Management without the Service Console

VMware ESXi continues trend of migrating management functionality from the Service Console to remote management tools

VMware ESX users today use the Service Console for...	VMware ESXi users will use...
Command line management or executing custom scripts (e.g. for new server deployment or patches)	Remote Command Line Interface (Remote CLI)
Running hardware agents for performance and health monitoring	Industry standard monitoring protocols; e.g., agent-less management via CIM
Running other 3 rd party agents	ISV solutions that leverage standard interfaces, the VI API, and VMware Consolidated Backup

Remote Command Line Interface (CLI)

Key features

- Supported in both Windows and Linux
- Replaces the scripting execution environment of the Service Console
- Uses the same commands and same syntax

Functions to include

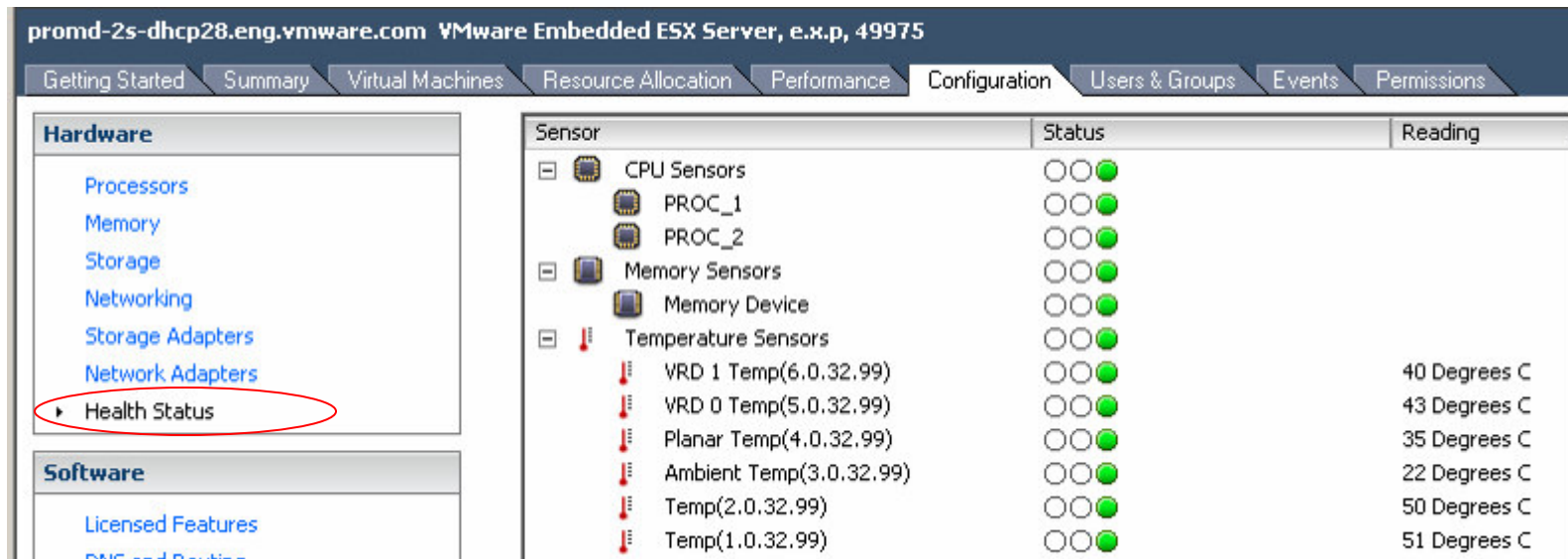
- Host Configuration (esxcfg-advcfg)
- Storage Configuration (esxcfg-nas, esxcfg-swiscsi, esxcfg-mpath, vmkfstools)
- Network Configuration (esxcfg-vswitch, esxcfg-vnic)
- Maintenance and patch (esxcfg-dumpart)
- Backup (VCBMounter, fast copy)
- Monitoring (esxtop, vmkuptime under discussion)

Many active management functions require a VMware Infrastructure 3 suite license for the ESXi host

Common Information Model (CIM)

Key features

- Agent-less, standards based monitoring of hardware resources
- Used by VirtualCenter to provide basic hardware status information
- CIM providers readable by 3rd party management tools



The screenshot shows the VMware Embedded ESX Server configuration interface. The top navigation bar includes tabs for Getting Started, Summary, Virtual Machines, Resource Allocation, Performance, Configuration, Users & Groups, Events, and Permissions. The left sidebar shows a tree view of hardware components: Processors, Memory, Storage, Networking, Storage Adapters, Network Adapters, and Health Status (which is circled in red). The main content area displays a table of sensors with columns for Sensor, Status, and Reading.

Sensor	Status	Reading
[-] CPU Sensors	○○●	
CPU PROC_1	○○●	
CPU PROC_2	○○●	
[-] Memory Sensors	○○●	
Memory Device	○○●	
[-] Temperature Sensors	○○●	
VRD 1 Temp(6.0.32.99)	○○●	40 Degrees C
VRD 0 Temp(5.0.32.99)	○○●	43 Degrees C
Planar Temp(4.0.32.99)	○○●	35 Degrees C
Ambient Temp(3.0.32.99)	○○●	22 Degrees C
Temp(2.0.32.99)	○○●	50 Degrees C
Temp(1.0.32.99)	○○●	51 Degrees C

VI API and Systems Management

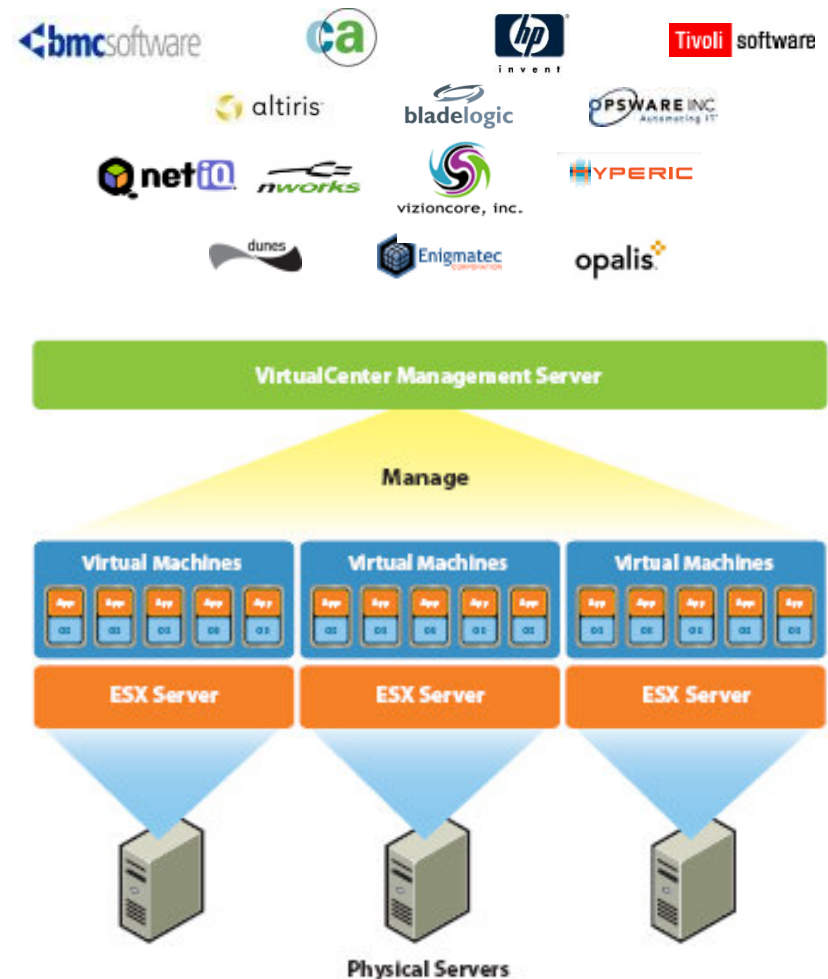
VI API Key Features

- Remote Web Services APIs
- Configuration of virtual machines and hosts
- Discovery and inventory functions in virtual environments.
- Access performance data
- Control VM operations - configuration changes and migrations, VM state

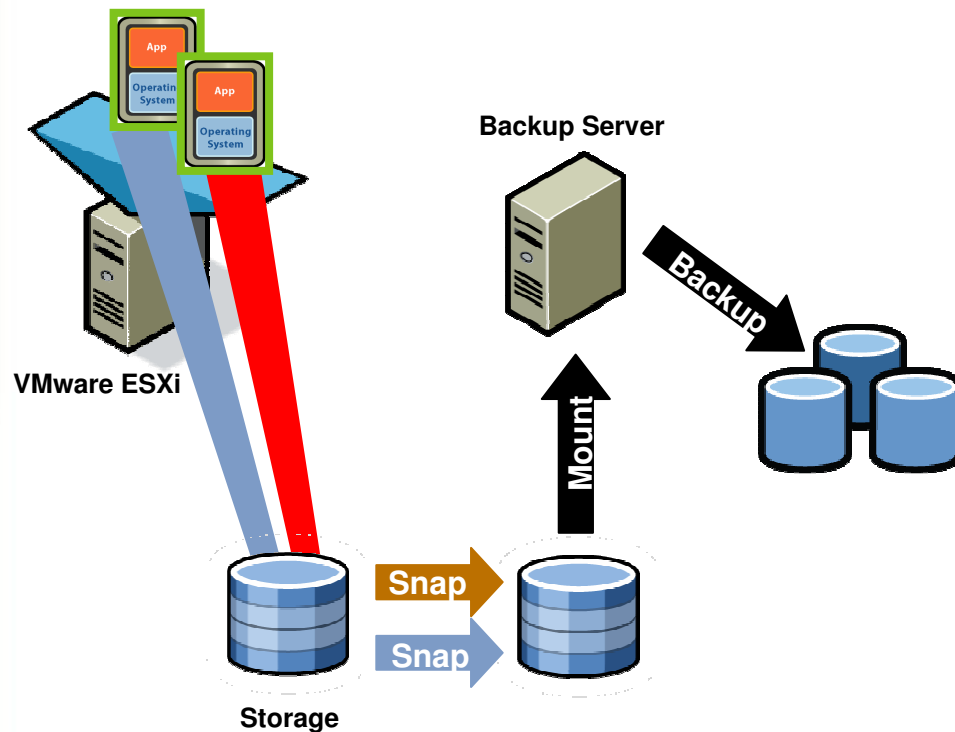
Third party management products integrate through VI APIs

- Enterprise Systems Management integrations from the Big 4
- Best-of-breed partner integrations for:
 - Monitoring
 - Performance Management
 - Process Automation
 - Provisioning, Change & Configuration Management

Many central management tasks and APIs require a VMware Infrastructure 3 suite license



VCB and Backup



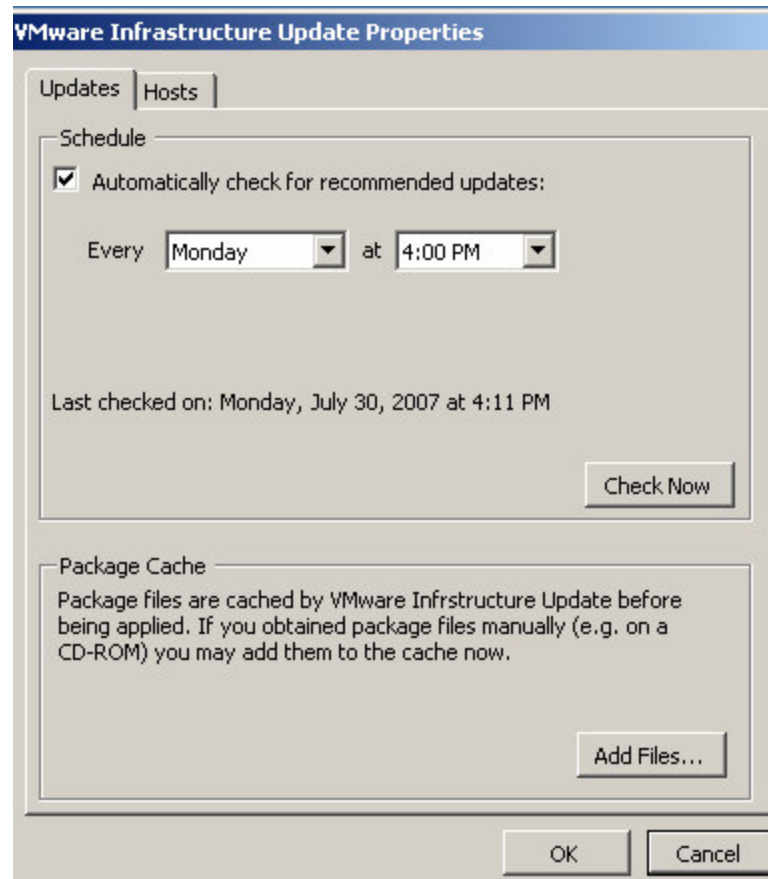
- > VMware Consolidated Backup (VCB) interface
- > Move backup out of the virtual machine
- > Eliminate backup traffic on the local area network
- > Integrated with major 3rd-party backup products
- > Available in any VI3 Bundle



Deployment of VMware ESXi

- > Many users today use Service Console scripts for installation and configuration of VMware ESX hosts
- > With VMware ESXi
 - No installation required – hardware integrated, ready-to-run
 - Configuration automation – detection, discovery, and good defaults
 - Remote CLI for additional configuration / customization

Patching and Upgrading of VMware ESXi



Patching Today with VMware ESX

- Patches are fine-grained
- Users employ 'esx-update' to install VMware ESX patches

With VMware ESXi

- Patch consists of whole image replacement
- Patch can be applied via Remote CLI or through Update Utility
- Back out of patches with a "dual bank" approach for ESXi Embedded

VMware ESXi 3.5 – Exec Summary

What is it?	Next generation, thin hypervisor for FREE
What does it do?	Partitions servers to create the most robust foundation for a dynamic, automated data center
What is unique?	<ul style="list-style-type: none">> Next generation, thin architecture provides improved security, reliability, and simplified management> Server integration provides rapid installation, configuration, and deployment
Who can use it?	<ul style="list-style-type: none">> All the sophistication of VMware ESX and VI3 for existing virtual infrastructure customers> Simple and intuitive start-up experience for the new virtualization user
How do you use it?	Supports all the VMware Infrastructure 3 features and benefits (appropriately licensed)



Thank you

For more information on Virtualization Performance, you can reach us at:

Website: www.virtualizationperformance.com
Tel: (813) 805-8750
Fax: (813) 436-5301
Mailing Address: P.O. Box 23682, Tampa, FL 33623

