

Alacritech iSCSI Scalable Network Accelerators™

The Complete Storage Performance Solution

Alacritech® iSCSI Scalable Network Accelerators™ (iSNAs) offer the most flexible, highest-performing, and lowest-cost solution for connecting to iSCSI storage. Alacritech's leading technology allows for a high-speed, truly scalable IP storage network. Now companies can leverage their existing IP network infrastructure, while maximizing server performance to handle more clients, run more applications, address more storage, and achieve higher network utilization.

Software solutions can provide iSCSI functionality, but not without slowing the server down. Only Alacritech's patented, industry-leading technology can accelerate iSCSI traffic, reduce processing overhead, and extend the life of a server.

Advanced Features

Alacritech supports MPIIO, network teaming and failover, and SAN boot—no other iSCSI card on the market can match Alacritech's ability to complete an IP SAN.

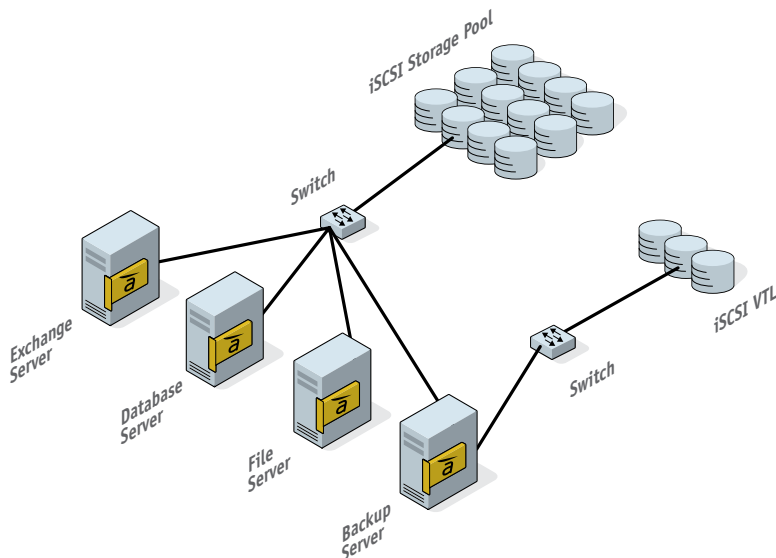
Universal Compatibility

Unlike iSCSI HBAs, which use proprietary initiator software, Alacritech iSNAs take advantage of the Microsoft® iSCSI initiator to connect to iSCSI targets. They appear as if they were NICs to the operating system so customers can be confident Alacritech iSNAs are compatible with their iSCSI target. The Microsoft® Scalable Networking Pack takes advantage of Alacritech's patented TCP offload technology in the form of TCP Chimney to help optimize server performance by removing existing network bottlenecks. The combination of Microsoft® TCP Chimney and Alacritech iSNAs drives the performance that today's high-speed networks demand.



Product Highlights

- Offers one, two, or four 10/100/1000BASE-T copper or 1000BASE-SX fiber ports
- High-performance ASIC-based iSCSI accelerator offloads iSCSI processing on Microsoft Windows® servers
- Accelerates the Microsoft® iSCSI Software Initiator
- Supports iSCSI boot
- Independent testing demonstrates the highest performance compared to all iSCSI HBAs
- Only iSCSI accelerator to deliver industry-standard Ethernet link aggregation and failover
- Supports MPIIO for high availability
- Supports Windows® XP, Windows Vista,™ Windows Server® 2003, Windows Server® 2008 and more



Accelerator Benefits

- Boosts iSCSI performance to full-wire speed
- Reduces CPU burden associated with IP storage data transfers
- Increases IP storage application performance, including backups
- iSCSI accelerator installs easily with the Microsoft® iSCSI Software Initiator

The Alacritech Family of iSCSI Scalable Network Accelerators

Global Product Attributes

- Onboard Memory: 16 MB per port
- Operating Temperature: 0° to 55° C (minimum airflow: 150LFM)
- Standards Compliance: ANSI/IEEE Std. 802.3, 2000 Edition (1000BASE-T, 100BASE-TX, 10BASE-T) FCC, CE, VCCI
- Limited Lifetime Warranty
- Package Contents: Card, manual, and CD with drivers

Fiber Optic Accelerators

Port Speeds	2000 Mbits/s Full Duplex
Connectors	Duplex LC (cable not included)
Media	1000BASE-SX; Multimode Fiber
Operating Humidity	8% to 80%, non-condensing
Diagnostic LEDs	Link and network activity

Model #	Ports	Power (typical)	Weight	Physical Size
SES2002XF	2	2A@5V	Fiber Card: 3.4oz (96g); card, manual, CD, box: 8.5oz (241g)	PCI low-profile MD2 2.536" x 6.600"
SES2102EF	2	1.2A@3.3V, 1.0A@12V	Fiber Card: 5.7oz (162g); card, manual, CD, box: 12.7oz (360g)	PCI 4.375" x 9.500"
SES2104EF	4	1.2A@3.3V, 1.5A@12V	Fiber Card: 6.7oz (162g); card, manual, CD, box: 13.7oz (388g)	PCI 4.375" x 9.500"

Platforms	SES2002XF, SES2102EF, SES2104EF - Windows® XP Professional x64 Edition, Windows Vista,™ Windows Server® 2003 and Windows Server® 2008 Standard, Enterprise and Data Center Editions
Bus Type(s)	SES2002XF - 133 MHz/64bit bus master PCI-X 1.0a universal card; compatible with 32bit PCI 2.2; low-profile enabled; standard height PCI 2.2 bracket and low-profile bracket included SES2102EF, SES2104EF - x4 PCI Express 1.0a

Twisted Pair Copper Accelerators

Port Speeds	IEEE Auto Negotiation: 10/100/1000 Mbits/s or 20/200/2000 Mbits/s with Full Duplex
Connectors	RJ-45 (cable not included)
Media	1000BASE-T, 100BASE-TX; Cat 5 or better; 10BASE-T; Cat 3 or better
Operating Humidity	5% to 85%, non-condensing
Diagnostic LEDs	Link status, speed, and network activity

Model #	Ports	Power (typical)	Weight	Physical Size
SES1811XT SES2001XT	1	3A@3.3V	Copper Card: 2.7oz (77g); card, manual, CD, box: 7.8oz (221g)	PCI low-profile MD2 2.536" x 6.600"
SES1812XT SES2002XT	2	3A@3.3V	Copper Card: 3.1oz (88g); card, manual, CD, box: 8.2oz (232g)	PCI low-profile MD2 2.536" x 6.600"
SES1822ET SES2102ET	2	1.5A@3.3V, 1A@12V	Copper Card: 5.4oz (153g); card, manual, CD, box: 12.4oz (352g)	PCI 4.375" x 9.500"
SES2104ET	4	2A@3.3V, 1.5A@12V	Copper Card: 6.1oz (173g); card, manual, CD, box: 13.1oz (371g)	PCI 4.375" x 9.500"

Platforms	SES1811XT, SES1812XT, SES1822ET - Windows® XP Professional x64 Edition, Windows Vista,™ Windows Server® 2003 and Windows Server® 2008 Standard Edition SES2001XT, SES2002XT, SES2102XT, SES2104ET - Windows® XP Professional x64 Edition, Windows Server® 2003 and Windows Server® 2008 Standard, Enterprise and Data Center Editions
Bus Type(s)	SES1811XT, SES1812XT, SES2001XT, SES2002XT - 133 MHz/64bit bus master PCI-X 1.0a universal card; compatible with 32bit PCI 2.2; low-profile enabled; standard height PCI 2.2 bracket and low-profile bracket included SES1822ET, SES2102ET, SES2104ET - x4 PCI Express 1.0a